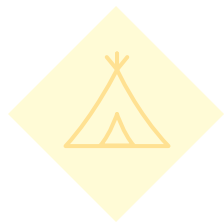
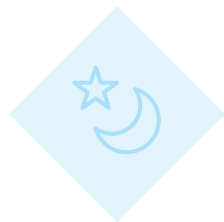


Experience the  
Entire Forest



曾爾 So ni

Guidebook



Mascot Character  
Sonitto

国立曾爾青少年自然の家  
National Soni Youth Outdoor Learning Center



## Overview

The National Soni Youth Outdoor Learning Center is located at the northeastern edge of Nara Prefecture on the border with Mie Prefecture, in the Soni Highlands, a vast grassland of silver grass that changes its appearance with the seasons. In front of the center, visitors can enjoy magnificent views of the mountain ranges including Yoroi-dake, Kabuto-dake, and Byobu-iwa. Surrounded by this grand and rich natural environment, the center is a youth education facility established to nurture young people who lead the next generation, fostering both healthy bodies and rich minds through various experiences such as nature activities and group accommodation programs.



## Key Initiatives

- **Greetings** Let's greet each other cheerfully together!
- **Cleaning** Let's make both Soni and our hearts shine!
- **Rules** There are rules everyone must follow!



## History

1976	April 1	The Ministry of Education decided to establish the Fifth National Youth Outdoor Learning Center in Nara Prefecture as part of the Centennial Commemoration Project for Students.
1979	August 31	Accommodation Building completed (Phase 1, capacity for 300 people)
	October 1	Following the revision of the Ministry of Education Ordinance, the "National Soni Youth Outdoor Learning Center" was established, and a temporary office was opened within the Ministry of Education.
1980	May 31	The Administration Building and the Living Building were completed.
	July 1	Opening ceremony for the commencement of operations was held.
	September 3	The vehicle access road was completed.
1981	July 1	Campsite opened.
	August 1	The outdoor cooking area was completed.
	October 30	The accommodation building (Phase 2, capacity for 100 people) and the Play Hall were completed.
	November 15	Opening ceremony was held.
1983	December 2	A field athletic course was installed.
1985	October 27	The 6th anniversary of the establishment and the 5th anniversary of the start of operations were commemorated with a celebration event.
1986	December 10	The Outdoor Activities Building was completed.
1988	February 10	The campsite administration building was completed.
1989	November 24	The 10th anniversary commemorative ceremony was held.
1992	December 24	A roofed cooking area and dining building were completed at the campsite.
1995	March 9	The Nakayoshi Hall was completed.
2000	March 21	The Ecology Hall was completed.
	November 17	The 20th anniversary commemorative ceremony was held.
2001	April 1	Became an Independent Administrative Institution under the jurisdiction of the Ministry of Education, Culture, Sports, Science and Technology.
2003	March 19	The mascot character "Sonitto" was created.
2006	April 1	Reorganized as a part of the National Institution for Youth Education following the merger of national youth education facilities.
2010	October 29	The 30th anniversary commemorative ceremony was held.
2018	April 12	Play equipment for young children (Sonikko Forest) was installed.
2019	May 28	A Forest Environmental Education Zone was established.
2020		40th anniversary of the establishment (no ceremony was held due to the COVID-19 pandemic). The "40th Anniversary Commemorative Publication" was issued.
2025	March	Air-conditioning systems installed in the training rooms and accommodation rooms



# User Guide

## Who can use the facility

- Overnight stay event for kindergarten children
- Nature experience activities for elementary schools, junior high schools, high schools, universities, and other educational institutions
- Training camps for clubs and circles
- Employee training for companies
- Outdoor activities for families, children's associations, and groups

## Conditions of Use

- A responsible adult or youth leader must be designated as the supervising person
- A specific activity plan must be prepared in advance

## Days when the facility is unavailable

- Year-end and New Year holidays (December 28 – January 4)
- Closed days (Irregular; please check the website for details)
- Facility and equipment maintenance days (generally about two days per month)

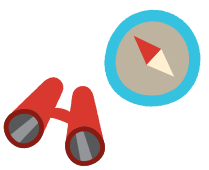
# Standard Daily Schedule

**Summer Period**  
March 1 - November 30

**Winter Period**  
December 1 - the last day of February



Mascot Character SonittoR



6:00	Wake-up		6:30
	Washing up and cleaning		
7:00	Morning assembly		7:30
7:30	Breakfast		8:00
9:00	Check-out inspection (on the day of departure only)		9:00
	Activities		
12:00~13:30	Lunch		12:00~13:30
	Activities		
16:05	Leaders' meeting		16:05
16:30	Evening assembly		16:30
17:00~19:30	Dinner		17:00~19:30
17:00~20:30	Bathing	Activities	
	Activities		
		Bathing	19:00~21:30
21:30	Preparation for bedtime		21:30
22:00	Bedtime		22:00



## A Day in Soni

# Exciting and memorable experiences in the midst of rich nature!

The National Soni Youth Outdoor Learning Center is a facility where visitors can learn the importance of nature through experiential learning and overnight activities, while fostering a rich mind and a healthy body. Activities such as hiking, orienteering, crafts, and outdoor cooking allow everyone to enjoy a wide range of experiences in harmony with nature. The joyful memories created through these shared experiences will remain in your heart for a long time.



## Indoor Facilities

### Administration and Training Building

Training Rooms / *Byobu* (200 people) · *Kabuto* (70 people) · *Yoroi* (50 people) · *Kameyama* (120 people) · *Kuroso* (120 people)

### Residential Building

Cafeteria / 268 people  
Men's Bath / 60 people  
Women's Bath / 60 people

### Accommodation Building

*Sakana*, *Kinoko*, *Hana*, *Mushi*, *Tori*, *Sora* / Maximum capacity: 312 people

### Play Hall

Volleyball / 1 court · Table Tennis / 10 tables · Badminton / 2 courts · Candle Fire activities, etc. / 400 people

### Craft Hall

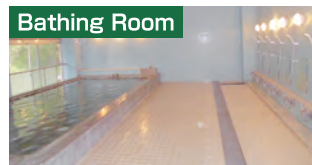
3 cooking stoves, 2 pizza ovens · Bamboo crafts and creative activities / 50 people

### Nakayoshi Hall

Volleyball / 1 court · Table Tennis / 10 tables · Badminton / 2 courts · Concerts and other events / 500 people

### Ecology Hall

Training Rooms / *Kogo* 1 (35 people) · *Kogo* 2 (35 people) · Exhibition Room / 40 people



## Outdoor Facilities

### Tsudoi Square

Opening ceremonies, closing ceremonies, campfires, etc. / 400 people

### Haturatsu Square

Campfires and other activities / 300 people

### Sonicco Forest (Playground equipment for young children)

Playground Equipment / 5 units

### Outdoor Cooking Area

Cooking Stoves / 50 units

### Campsite

Tent Sites -  
Roofed Outdoor Cooking Area (Stoves) / 16 units

### Campsite Parking Lot (Bus Only)

Buses / 10

### Main Building Parking Lot

Cars / 50



# Activity Programs

## Main Outdoor Activities

- Hiking
- River Activities
- Constellation Observation
- Photo Orienteering
- Cooking Hot Dogs with Milk Cartons
- Disc Golf
- Outdoor Cooking
- Campfire
- Baumkuchen Making
- Orienteering
- Night Hike
- Athletic Playground for Young Children
- Forest Environmental Education Program



Hiking



Constellation Observation



Outdoor Cooking



Outdoor Cooking



Campfire



Baumkuchen Making



Athletic Playground for Young Children



Forest Environmental Education Program

## Main Indoor Activities

- Candle Fire Program
- Udon Making
- Nature Discovery Orienteering
- Challenge Ranking
- Sonitto Bingo
- KAPLA (Wooden Building Blocks)
- Domino Toppling
- Climb Walk



Candle Fire Program



Nature Discovery Orienteering

### Craft



Burnt Wood Craft

- Bamboo Crafts
- Burnt Wood Craft
- Cloisonne
- Wooden Coaster Making
- Forest Crafts
- Wooden Spoon and Fork Making



Wooden Spoon and Fork Making

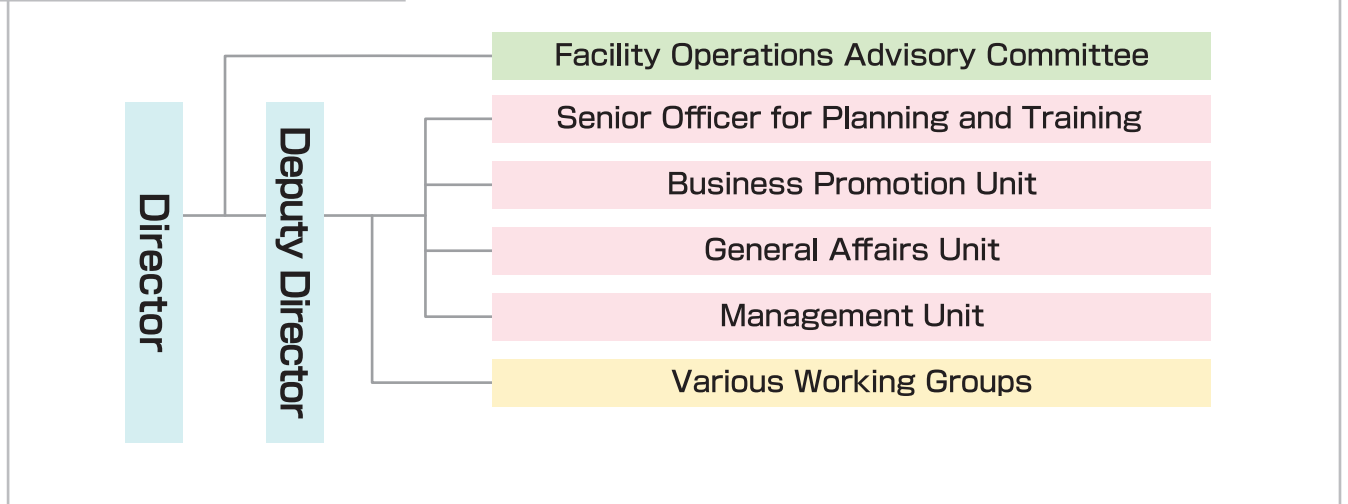


Wooden Coaster Making



# Management Organization

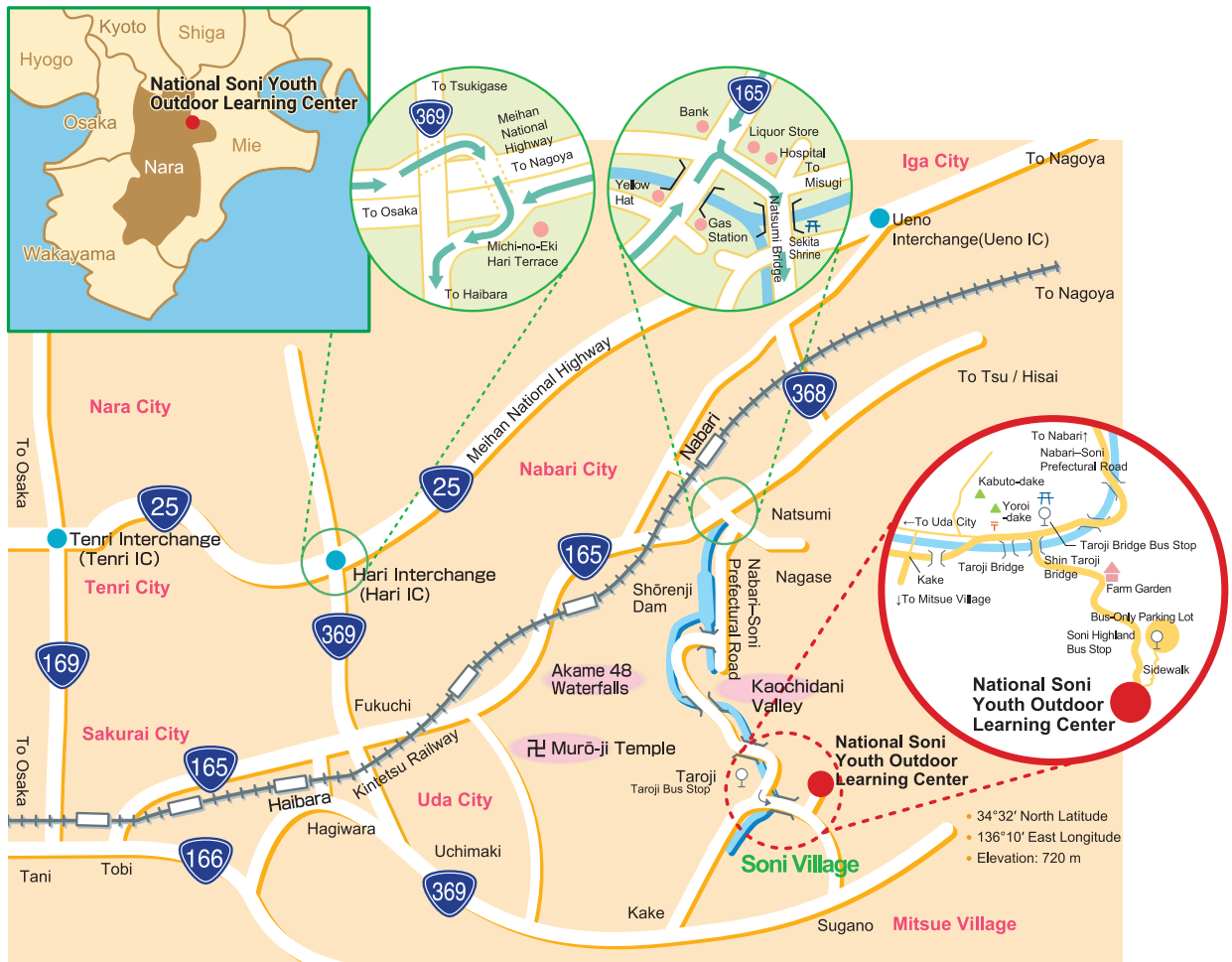
## Organizational Chart



## Support Our Mission

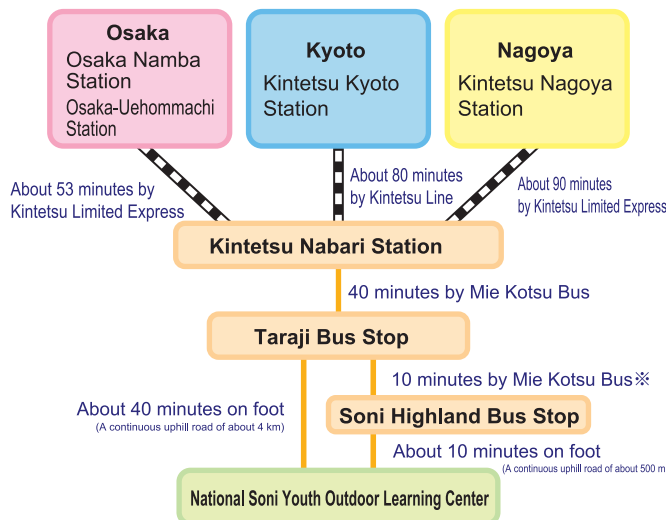
To further promote the healthy development of youth, the National Soni Youth Outdoor Learning Center welcomes partnerships, cooperation, and financial support from organizations and individuals. If you share our vision and would like to support our educational programs and facilities, please contact us. To view a complete list of our supporting organizations and partners, please visit our official website.





● Travel Time by Public Transportation

● Distance and Travel Time by Car



- From Ueno Interchange (42 km) 1 hour 10 minutes
- From Hari Interchange (40 km) 1 hour
- From Tenri Interchange (57 km) 1 hour 30 minutes
- From Nabari Natsumi Intersection (21 km) 40 minutes
- From Haibara Hagiwara Intersection (28 km) 50 minutes
- From Taroji Bus Stop (4.5 km) 15 minutes

※In winter, snow chains for tires are required.

※Mie Kotsu buses operate only between October 1 and November 30 from Taroji Bus Stop to Soni Kogen Bus Stop.



Mascot Character Sonitto

Institution Emblem



The design stylizes the character "So" from Soni, expressing wind, clouds, and paths, and incorporates green to represent the land, symbolizing the richness of nature.

National Institution for Youth Education  
**National Soni Youth Outdoor Learning Center**

1170 Taroji, Soni Village, Uda District, Nara 633-1202, Japan  
 TEL 0745-96-2121 FAX 0745-96-2126  
 Email Address soni@niye.go.jp  
 Website Address <https://soni.niye.go.jp/>

